

SHAPE YOUR FUTURE, COME TO POLIMI!

ARCHITECTURE, DESIGN, ENGINEERING

Choose Politecnico di Milano for your exchange period abroad

GET TO KNOW POLITECNICO

Politecnico di Milano is among the best technical and scientific universities in the world, offering double degrees worldwide and taking part in countless national and international research projects.

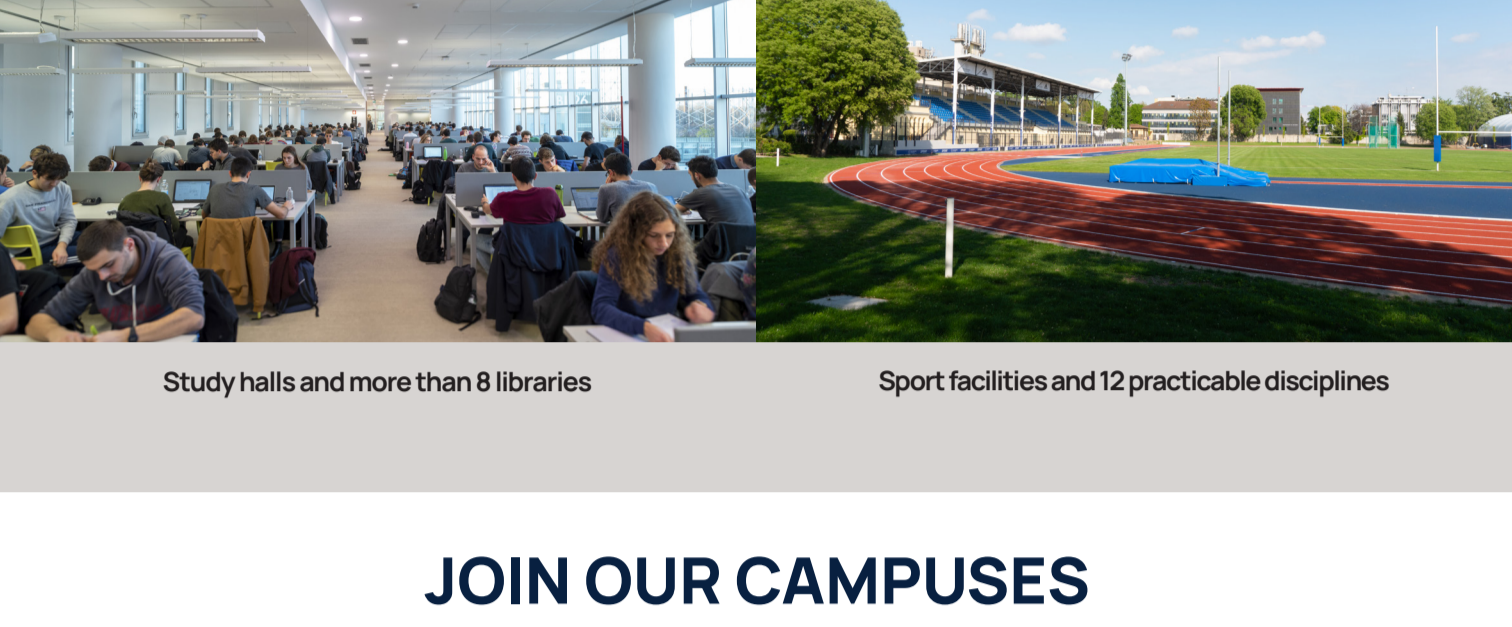
Take a look at some numbers!

- 1st** In Italy according to the 2025 QS World University Ranking
- +100** Countries that international students come from
- 6th** 2025 QS WUR by Subject Art and Design
- 12** Departments
- 7th** 2025 QS WUR by Subject Architecture and Built Environment
- 4** Schools
- +200** Departmental laboratories
- 21st** 2025 QS WUR by Subject Engineering and Technology
- 91%** Students who find a job within 6 months

STUDENT LIFE HAS MUCH TO OFFER

Large infrastructures for projects and research

Over 30 student associations in several fields



Study halls and more than 8 libraries

Sport facilities and 12 practicable disciplines

JOIN OUR CAMPUSES

Each offering top-quality education and a vibrant student community

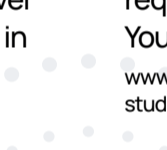


DISCOVER THE LOMBARDY REGION



HOW TO APPLY

Are you interested in joining Politecnico di Milano as an exchange student? You can apply and find further information at this QR!



CHECK YOUR LANGUAGE LEVEL

- Exchange Programmes: Level B1 in Italian (recommended for courses in Italian). Level B2 in English (recommended for courses in English). No certificate is required.
- Double Degree programmes: Students are required to submit an English language certificate. You can check the requirements here: www.polimi.it/en/campus-e-servizi/international-mobility/exchange-students-incoming/application

EXCHANGE STUDIES A.Y. 25-26

Politecnico di Milano has many exchange agreements with the most quality universities in Europe and in the world. Each year more than 2000 exchange students enjoy quality in teaching and research within the three macro areas engineering, architecture and design, structured in 4 Schools.

- Most courses at Bachelor level are offered in Italian, while the majority of courses at Master level are taught in English.
- Students may pick courses at both levels if all prerequisites are met and the school gives approval.
- 1 ECTS credit (1 CFU) = about 25 hours of workload including classes, practice, homework. Full time studies equals 30 ECTS per semester and 60 ECTS for a full academic year. No minimum number of CREDITS is required.
- Students are required to choose the majority of all credits from the programme they enrol in.

Academic Calendar

To find out more about programmes

	Lessons	Exams
Autumn Semester	Mid September-December	January/February
Spring Semester	End of February-June	June/July



EDUCATIONAL OFFER

- School of Architecture Urban Planning Construction Engineering
- School of Design
- School of Civil, Environmental and Land Management Engineering
- School of Industrial and Information Engineering

ARCHITECTURE

- Recommended amount of credits is 30 ECTS per semester (no minimum requested).
- Architecture studios and workshops are subject to availability. Those taught in Italian have more places.

BACHELOR OF SCIENCE/LAUREA	MI-LEO	MI-BV	CREMONA	LECCO	MANTOVA	PIACENZA
Progettazione dell'Architettura/Architectural Design	🇮🇹 🇬🇧	●			●	●
Urbanistica: Città Ambiente Paesaggio/Urban Planning: Cities, Environment & Landscapes	🇮🇹	●				

MASTER OF SCIENCE/LAUREA MAGISTRALE	MI-LEO	MI-BV	CREMONA	LECCO	MANTOVA	PIACENZA
Architectural Design and History	🇬🇧				●	
Architettura/Architecture	🇮🇹 🇬🇧	●				
Landscape Architecture - Land Landscape Heritage	🇮🇹 🇬🇧					●
Sustainable Architecture and Landscape Design	🇮🇹 🇬🇧					●
Urban Planning and Policy Design	🇮🇹 🇬🇧	●				

DESIGN

- Exchange students can select minimum 6 credits and a maximum of 30 credits per semester.
- Design studios and workshops are subject to availability.

BACHELOR OF SCIENCE/LAUREA	MI-LEO	MI-BV	CREMONA	LECCO	MANTOVA	PIACENZA
Design degli Interni/Interior Design	🇮🇹	●				
Design della Comunicazione/Communication Design	🇮🇹	●				
Design della Moda/Fashion Design	🇮🇹	●				
Design del Prodotto Industriale/Product Design	🇮🇹	●				
Interaction Design	🇬🇧			●		

MASTER OF SCIENCE/LAUREA MAGISTRALE	MI-LEO	MI-BV	CREMONA	LECCO	MANTOVA	PIACENZA
Design & Engineering	🇬🇧	●				
Digital and Spatial Design	🇬🇧	●				
Interior and Spatial Design	🇮🇹 🇬🇧	●				
Design della Comunicazione / Communication Design	🇮🇹 🇬🇧	●				
Design for the Fashion System	🇮🇹 🇬🇧	●				
Integrated Product Design	🇮🇹 🇬🇧	●				
Product Service System Design	🇬🇧	●				

ENGINEERING

- Recommended amount of credits is a maximum of 30 per semester (no minimum requested).
- Even though students in their third year of bachelor are allowed to choose courses at master level, it should be taken in consideration that examinations are very demanding.

BACHELOR OF SCIENCE/LAUREA	MI-LEO	MI-BV	CREMONA	LECCO	MANTOVA	PIACENZA
Ingegneria Aerospaziale/Aerospace Engineering	🇮🇹	●				
Ingegneria Biomedica/Biomedical Engineering	🇮🇹	●				
Ingegneria Chimica/Chemical Engineering	🇮🇹	●				
Ingegneria Civile/Civil Engineering	🇮🇹	●				
Ingegneria della Produzione Industriale/Industrial Production Engineering	🇮🇹 🇬🇧			●		
Ingegneria dell'Automazione/Automation Engineering	🇮🇹	●				
Ingegneria dei Materiali e delle Nanotecnologie/Materials and Nanotechnology Engineering	🇮🇹	●				
Ingegneria Edile e delle Costruzioni/Building and Construction Engineering	🇮🇹	●				
Ingegneria Elettrica/Electrical Engineering	🇮🇹	●				
Ingegneria Elettronica/Electronic Engineering	🇮🇹	●				
Ingegneria Energetica/Energy Engineering	🇮🇹	●				
Ingegneria Fisica/Engineering Physics	🇮🇹	●				
Ingegneria Gestionale/Management and Production Engineering	🇮🇹	●	●			
Ingegneria Informatica/Engineering of Computing Systems	🇮🇹	●	●			
Ingegneria Matematica/Mathematical Engineering	🇮🇹	●				
Ingegneria Meccanica/Mechanical Engineering	🇮🇹	●				●
Ingegneria per l'Ambiente e il Territorio/Environmental and Land Planning Engineering	🇮🇹	●				

MASTER OF SCIENCE/LAUREA MAGISTRALE	MI-LEO	MI-BV	CREMONA	LECCO	MANTOVA	PIACENZA
Aeronautical Engineering	🇬🇧	●				
Agricultural Engineering	🇬🇧		●			
Architectural Engineering	🇬🇧			●		
Automation and Control Engineering	🇬🇧	●				
Building Engineering for Sustainability	🇮🇹	●				
Chemical Engineering	🇬🇧	●				
Civil Engineering for Risk Mitigation	🇬🇧			●		
Computer Science and Engineering	🇬🇧	●				
Electrical Engineering	🇬🇧	●				
Electronics Engineering	🇬🇧	●				
Engineering Physics	🇬🇧	●				
Food Engineering	🇬🇧	●				
Geoinformatics Engineering	🇬🇧	●				
High Performance Computing Engineering	🇬🇧	●				
Industrial Safety and Risk Engineering	🇮🇹	●				
Ingegneria Biomedica/Biomedical Engineering	🇮🇹	●				
Ingegneria Civile/Civil Engineering	🇮🇹	●				
Ingegneria Edile-Architettura/Building Engineering/Architecture (C.U.)	🇮🇹	●			●	
Ingegneria Energetica/Energy Engineering	🇮🇹	●				●
Ingegneria per l'Ambiente e il Territorio/Environmental and Land Planning Engineering	🇮🇹	●				
Management Engineering	🇬🇧	●				
Management of Built Environment	🇬🇧	●				
Materials Engineering and Nanotechnology	🇬🇧	●				
Mathematical Engineering	🇬🇧	●				
Mechanical Engineering	🇬🇧	●				
Mobility Engineering	🇬🇧	●		●		
Music and Acoustic Engineering	🇬🇧	●	●			
Nuclear Engineering	🇬🇧	●				
Space Engineering	🇬🇧	●				
Telecommunication Engineering	🇬🇧	●				

SETTLE IN AND FEEL AT HOME!

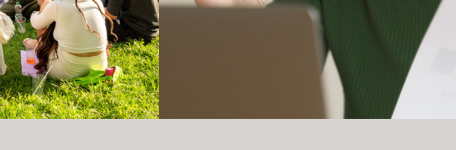
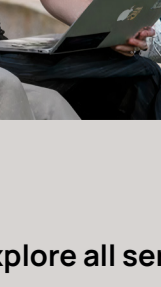
Find a Buddy

Join the Welcome events

Consider Italian language courses



To explore all services



/polimi